

## Review Article

# Cellular Flow Cytometric Studies

David Aebisher<sup>1\*</sup>, Dorota Bartusik<sup>2</sup>, and Jacek Tabarkiewicz<sup>3</sup>

<sup>1</sup>Shorter University, Natural Sciences Department, Georgia, USA

<sup>2</sup>Southern Polytechnic State University, Department of Biology and Chemistry, Georgia, USA

<sup>3</sup>University of Rzeszów, Centre for Innovative Research in Medical and Natural Sciences,  
Rzeszów, Poland

### Abstract

This review focuses on flow cytometric studies at the single cell level. Currently, flow cytometry is used to analyze DNA content, cell cycle distribution, cellular viability, apoptosis, calcium flux, intracellular pH and expression of cell surface compounds in targeted cell populations. Our criteria for the selection of research papers for this review were focused on those that show current cellular applications of flow cytometry.

**Keywords:** Flow Cytometry; Tumor; Cell; Cell Surface Compounds; Targeting

**Received:** September 3, 2016; **Accepted:** September 26, 2016; **Published:** November 4, 2016

**Competing Interests:** The authors have declared that no competing interests exist.

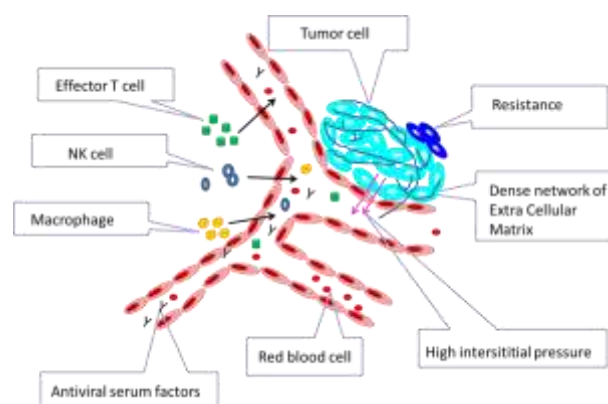
**Copyright:** 2016 Aebisher D *et al.* This is an open-access article distributed under the terms of the Creative Commons Attribution License, which permits unrestricted use, distribution, and reproduction in any medium, provided the original author and source are credited.

**\*Correspondence to (Present Address):** Aebisher D, Shorter University, Natural Sciences Department, Georgia, USA

**E-mail:** davea432@gmail.com

## Introduction

Flow cytometry has been available since the 1970s and has been revolutionizing fields of medicine since its discovery. The earliest application of cytometry was to measure the physical and chemical characteristics of blood and cancer cells [1, 2]. At the present time, flow cytometry is employed as a diagnostic tool used to measure the effects of immunotherapy on tumor biology [3, 4]. It still remains a technological challenge to extract three-dimensional morphological information from cells for complete characterization and classification [5]. Recently, morphology of complicated cellular systems such as cancer can be studied on a single-cell level. Also, flow cytometry advanced the chemistry of cell labelling with fluorescent agents by applying up to 18 emission colors with high resolution detection to study cancer tumor biology. As a result, cellular composition, DNA content and lymph nodes at the single cell level have been analyzed using an integrated system of multicolor flow cytometry which provides real-time mapping of vessels [6]. The markers of metastatic cancer are circulating tumor cells (CTCs) from the primary tumor [7, 8] and flow cytometry is advancing the detection of metastatic circulating tumor cells [9]. Current flow cytometric measurements of cell morphology include changes in cell shape, loss of structure on the cell surface, cell detachment, condensation of the cytoplasm and cell shrinkage. Flow cytometry can also measure chemical changes such as the variation in cellular calcium content, pH and intracellular generation of reactive oxygen species [10]. Cells from solid tumor tissue require disaggregation before they can be analyzed by flow cytometry [11]. The cell sorting capabilities of flow cytometry have been use in the analysis of antibody conjugates and site-specific conjugated cells [12]. Other cellular processes that can be monitored by flow cytometry are: cell cycle regulation; cell survival and DNA repair; cellular differentiation; signal transduction; antioxidant and xenobiotic detoxification; stem cell biology; metabolic regulation; epigenetic mechanisms of gene regulation and tumor/stroma interactions [13-15]. DNA content varies with each phase of the cell cycle and this can be assessed using fluorescent DNA binding dyes and monoclonal antibodies to detect the expression of antigens [16]. Dead cells can now be identified at the early or late stages of necrosis using a range of viability dyes [16]. The heterogeneity of a tumor (Figure 1) and the interconnections between cellular components and tissues complicate the evaluation of the immune response. Flow cytometry as a single cell detection method can visualize and map immunological interventions as well as aid in elucidation of the underlying mechanisms of immunity.



**Figure 1** Heterogeneous tumor environment with immune system interaction.

## Early Studies

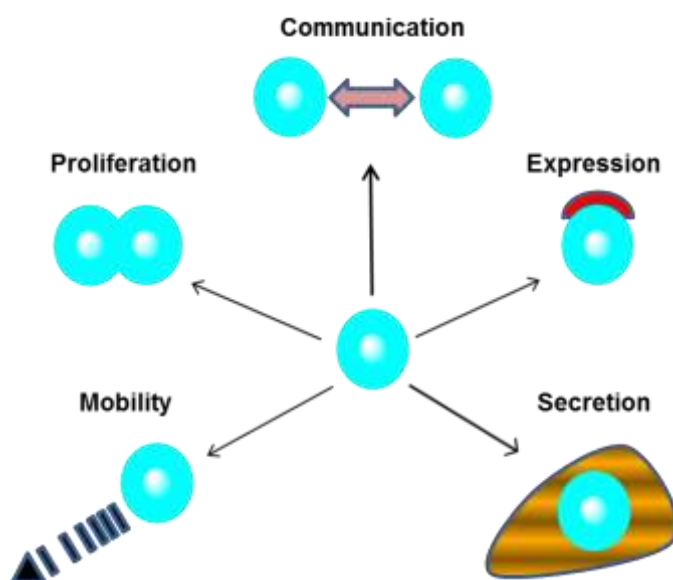
The beginnings of flow cytometry started more than 50 years ago. In the 1940s, Papanicolaou and Traut demonstrated that they could identify cells from cervical cancer by staining tissues with specifically designed stains [17]. In 1953, Coulter patented the first cytometric instrument which was used for accurate determination of the number of white or red blood cells, based on electronic impedance measurements (US patent number 2,656,508) [18]. Based on these advances, single-cell analyzers were constructed in the 1960s. In 1965, Fulwyler developed the first microfluorometer (flow cytometer) called the *Los Alamos Flow Microfluorometer* [19]. The flow microfluorometer was a cell separator. This instrument separated cells based on cell volume. In 1968, Göhde developed the first fluorescence-based apparatus which worked as a pulse cytophotometer [18]. However, at this time, fluorescence techniques were not as popular in research as absorption spectroscopies. Thus, the first commercial flow cytometer was built around a Zeiss fluorescent microscope. The commercial name of this cytometer was The *Cytograph* which had an onboard He-Ne laser system at 633 nm for scatter measurements. This instrument could segregate and sort live and dead cells depending on their uptake of Trypan blue. These advances were followed by a fluorescence apparatus called the *Cytofluorograph* with an air-cooled argon laser operating at 488 nm. In 1976, eight years after the first fluorescence based flow cytometer was introduced, it was agreed at the Conference of the American Engineering Foundation in Pensacola, Florida, that the name “*flow cytometry*” would be used [19]. Many commercially available cytometers are now equipped with several lasers for multiple wavelength generation. Laser diodes emitting at approximately 640 nm were introduced into flow cytometers in the early 1990s as replacements for the He-Ne laser [20]. Small He-Ne lasers continued to be used in flow cytometers for some time, but laser diodes are now used predominantly. Violet laser diodes were the next laser type to see wide usage in flow cytometry. The development of polychromatic flow cytometry and multicolor technology has enabled the detection of five or more markers simultaneously. Flow cytometry provides a high throughput, multi-dimensional analysis of cells flowing in suspension. Today, modern instruments have several lasers and detectors which enables multiple and accurate identification of cells from animals, plants, bacteria, yeast or algae and particles such as chromosomes or nuclei [21, 22].

Flow cytometry analyses particles in a fluid as they pass through lasers [23]. Any cell or particle that is 0.2 to 150  $\mu\text{m}$  in size can be analyzed using a flow cytometer. The purpose of the fluidics system is to transport particles in a stream of fluid to the laser beam where they are illuminated. The fluorescence can then be measured to determine the amount and type of cells present in a sample [24-29]. Choosing the correct lasers and filter configurations for fluorescent protein analysis is similar to designing the detection optics for fluorescent probe or probes. The excitation wavelength should be as close to the excitation maxima as possible, although the broad excitation curves for fluorescent proteins allow some flexibility in laser choice [30-32].

## Various Analyses

Flow cytometry is the preferred assay to use for cells sorting, cell counting, drug screening and phenotypic analysis [33]. The preclinical and clinical usefulness of flow cytometry as a diagnostic tool has increased due to advances in cancer research with the development of new cancer drugs and treatments. Traditionally, flow cytometry has been used for the analysis of tumor biology [34].

Flow cytometry allows multiparameter analysis of single cells. Figure 2 illustrates several major facets of cellular studies that can be performed by using flow cytometry. Besides cell sorting and counting, cytometric measurements enable monitoring of cellular interactions, expression of surface molecules, cellular proliferation, secretion and cell mobility. Cell proliferation cytometric analyses can characterize cell growth and differentiation. Measurement of cell proliferation is used to evaluate drug toxicity and inhibition of tumor cell growth. Proliferation measurements using flow cytometry is an assay of DNA content [35, 36]. Detection of secreted proteins is difficult as proteins released from the cell before detection or may degrade rapidly. Intracellular staining methods can then be used for detection of target proteins using flow cytometry. Flow cytometry is used to establish secretion profiles of granules and cytokines and cytokines associated with immune cells can influence cell mobility [37]. Monitoring of cell-cell interactions using flow cytometry is achieved by labelling cells with different dyes. Expression of common cell surface molecules such as glycolipids, glycoproteins and clusters of differentiations (often abbreviated as CD) are also measured by flow cytometry. CD markers are surface molecules providing targets for immunophenotyping of cells such as CD34<sup>+</sup>, CD31<sup>-</sup>, CD117 for stem cells, CD45<sup>+</sup> for all leukocyte groups, CD45<sup>+</sup>, CD11b, CD15<sup>+</sup>, CD24<sup>+</sup>, CD114<sup>+</sup>, CD182<sup>+</sup> for granulocyte, CD4, CD45<sup>+</sup>, CD14<sup>+</sup>, CD114<sup>+</sup>, CD11a, CD11b, CD91<sup>+</sup>, CD16 for Monocyte, CD45<sup>+</sup>, CD3<sup>+</sup> for T lymphocyte, CD45<sup>+</sup>, CD3<sup>+</sup>, CD4<sup>+</sup> for T helper cell, CD4, CD25 for T regulatory cell, CD45<sup>+</sup>, CD3<sup>+</sup>, CD8<sup>+</sup> for cytotoxic T cell, CD45<sup>+</sup>, CD19<sup>+</sup>, CD20<sup>+</sup>, CD24<sup>+</sup>, CD38, CD22 for B lymphocyte, CD45<sup>+</sup>, CD61<sup>+</sup> for thrombocyte and CD16<sup>+</sup>, CD56<sup>+</sup>, CD3<sup>-</sup>, CD31, CD30, CD38 for natural killer cells [38, 39]. Cell adhesion molecules (CAMs) are proteins located on the cell surface. Cell adhesion molecules belong to four protein families: the immunoglobulin superfamily (IgSF CAMs), the integrins, the cadherins, and the selectins [40]. Calcium-independent cell adhesion molecules are IgSF CAMs and lymphocyte homing receptors; calcium-dependent CAMs are integrins, cadherins, and selectins [41].



**Figure 2** Cell Activity in Heterogeneous Tumor

A review by Brown and coworkers presents applications and principles of flow cytometry in clinical hematology [42] for the study of hematologic malignancies and disorders of myeloid and

lymphoid such as myeloid leukemia, chronic myeloproliferative neoplasms and chronic myelodysplastic neoplasms. Lymphoid disorders studied by flow cytometry include acute lymphoblastic leukemia/lymphomas, B-cells, T-cell, and NK-cell lymphomas, large granulocytic leukemia with Kir antibodies, plasma cell myelomas and Sezary syndrome. Flow cytometry has been shown to be effective for evaluating changes in cell number and proliferation during breast cancer chemotherapy [43, 44]. Flow cytometry identifies and segregates (or isolates) particular types of cells based on expression of marker molecules on their surface [45-47]. Begg and coworkers applied this technique to the study of fibrosarcoma and adenocarcinoma tissues [48]. Also, the biology of cancer tumors before and after irradiation has been studied by flow cytometry [49-51]. The intracellular distribution of important chemotherapeutic antibiotics belonging to the anthracycline group (e.g. adriamycin) was detected by flow cytometry [52, 53]. Flow cytometric investigation showed that GNRs conjugated with doxorubicin and cyclo(Arg-Gly-Asp-D-Phe-Cys) peptide demonstrated greater cellular uptake and cytotoxicity compared to non-targeted GNRs conjugated with doxorubicin [54]. Recently, synthetic glycocluster tumor antigen conjugates which are promising for the development of tumor vaccines, have been evaluated by flow cytometry [55, 56]. Other studies include serotonin signaling [57], the administration of thymidine analogues [58], and targeted delivery of therapeutics such as cytokines and antibodies [59]. All targeting agents can be monitored at several stages of activity by using flow cytometry. Recent advances in flow cytometry have made it possible to screen biopharmaceuticals and provide their distribution, targeting efficiency and cell vitality conditions.

## Conclusion

The most recent studies demonstrate that flow cytometry can be used for disease detection and treatment monitoring. Flow cytometry is likely the preferred method of diagnosing and immunophenotyping various types of cancers. The advances in immunotherapy are likely to benefit from the availability of flow cytometry in preclinical and clinical research. Flow cytometry provides fast multi-parameter quantification of the biological properties of individual cells at subcellular and molecular levels.

## References

1. Shapiro HM. The Evolution of Cytometers. *Cytometry A*. 2004, 58A:13-20
2. Maleki, MH, Devaney AJ, Schatzberg A. Tomographic reconstruction from optical scattered intensities. *J Opt Soc Am*. 1992, 9:1356-1363
3. Samra HS, He F. Advancements in High Throughput Biophysical Technologies: Applications for Characterization and Screening during Early Formulation Development of Monoclonal Antibodies. *Mol. Pharmaceutics*. 2012, 9:696-707
4. Maltsev VP. Scanning flow cytometry for individual particle analysis. *Rev Sci Instrum*. 2000, 71:243-255
5. George TC, Basiji DA, Hall BE, Lynch DH, Ortyn WE, Perry DJ, Seo MJ, Zimmerman CA, Morrissey PJ. Distinguishing modes of cell death using the ImageStream multispectral imaging flow cytometer. *Cytometry A*. 2004, 59:237-245
6. Galanzha EI, Kokoska MS, Shashkov EV, Kim JW, Tuchin VV, Zharov VP. In vivo fiber-based multicolor photoacoustic detection and photothermal purging of metastasis in sentinel lymph nodes targeted by nanoparticles. *J Biophoton*. 2009, 2:(8-9),528-539

7. Galanzha EI, Zharov V. Circulating Tumor Cell Detection and Capture by Photoacoustic Flow Cytometry in Vivo and ex Vivo. *Cancers*. 2013, 5(4):1691-1738
8. Alix-Panabières C, Schwarzenbach H, Pantel K. Circulating tumor cells and circulating tumor DNA. *Annu Rev Med*. 2012, 63:199-215
9. Bai H, Liu Y, Xie Y, Hoyle DL, Brodsky RA, Cheng LO, Cheng T, Wang ZZ. Definitive Hematopoietic Multipotent Progenitor Cells Are Transiently Generated From Hemogenic Endothelial Cells in Human Pluripotent Stem Cells. *J Cell Physiol*. 2016, 231(5):1065-1076
10. Moldovan A. Photo-electric technique for the counting of microscopical cells. *Science*. 1934, 80:188-189
11. Ramanathan M. Flow Cytometry Applications in Pharmacodynamics and Drug Delivery. *Pharm Res*. 1997, 14(9):1106-1114
12. Spatola BN, Murray JA, Kagnoff M, Kaukinen K, Daugherty PS. Antibody Repertoire Profiling Using Bacterial Display Identifies Reactivity Signatures of Celiac Disease. *Anal Chem*. 2013, 5:1215-1222
13. Hallam TJ, Wold E, Wahl A, Smider VV. Antibody Conjugates with Unnatural Amino Acids. *Mol Pharmaceutics*. 2015, 12:1848-1862
14. Jacobs KM, Yang LV, Ding J, Ekpenyong AE, Castellone R, Lu JQ, Hu XH. Diffraction imaging of spheres and melanoma cells with a microscope objective. *J Biophoton*. 2009, 2(8-9):521-527
15. Chang Q, Hedley D. Emerging applications of flow cytometry in solid tumor biology. *Methods*. 2012, 57:359-367
16. Ishibashi K, Tsuji A. IL-2 or IL-4 mRNA as a Potential Flow Cytometric Marker Molecule for Selective Collection of Living T Helper 1 or T Helper 2 Lymphocytes. *Anal Chem*. 2003, 75:2715-2723
17. Sack U, Tánok A, Rothe G (eds). Cellular Diagnostics Basic Principles, Methods and Clinical Applications of Flow Cytometry. Basel, Karger, 2009, 1-28
18. Spyropoulos B. 50 years LASERS: in vitro diagnostics, clinical applications and perspectives. *Clin Lab*. 2011, 57(3-4):131-142
19. Quirke P, Dyson JED. Flow cytometry: Methodology and applications in pathology. *J Pathol*. 1986, 2:79-87
20. Yu D, Baird MA, Allen JR, Howe ES, Klassen MP, Reade A, Makhijani K, Song Y, Liu S, Murthy Z, Zhang SQ, Weiner OD, Kornberg TB, Nung Y, Davidson MW, Shu X. A naturally monomeric infrared fluorescent protein for protein labeling in vivo. *Nat Methods*. 2015, 12:763-765
21. Young YK, Bolt AM, Ahn R, Mann KK. Analyzing the Tumor Microenvironment by Flow Cytometry. *Methods Mol Biol*. 2016, 1458:95-110
22. Mittag A, Tarnok A. Recent advances in cytometry applications: preclinical, clinical, and cell biology. *Methods Cell Biol*. 2011, 103:1-20
23. Bendall SC, Nolan GP, Roederer M, Chattopadhyay PK. A deep profiler's guide to cytometry. *Trends Immunol*. 2012, 33(7): 323-380
24. Patterson JO, Swaffer M, Filby A. An Imaging Flow Cytometry-based approach to analyse the fission yeast cell cycle in fixed cells. *Methods*. 2015, 82:74-84
25. Hogg K, Thomas J, Ashford D, Cartwright J, Coldwell R, Weston DJ, Pillmoor J, Surry D, O'Toole P. *Methods*. 2015, 82:38-46
26. Telford WG, Hawley T, Subach F, Verkhusha V, Hawley RG. Flow cytometry of fluorescent proteins. *Methods*. 2012, 57:318-330
27. Kitsos CM, Bhamidipati P, Melnikova I, Cash EP, McNulty C, Furman J, Cima MJ, Levinson D.

- Combination of Automated High Throughput Platforms, Flow Cytometry, and Hierarchical Clustering to Detect Cell State. *Cytometry A*. 2007, 71A:16-27
28. Fattaccioli J, Baudry J, Emerard JD, Bertrand E, Goubault C, Henry CN, Bibettea J. Size and fluorescence measurements of individual droplets by flow cytometry. *Soft Matter*. 2009, 5:2232-2238
  29. Morgan E, Varro R, Sepulveda H, Ember JA, Apgar J, Wilson J, Lowe L, Chen R, Shivraj L, Agadir A, Campos R, Ernst D, Gaur A. Cytometric bead array: a multiplexed assay platform with applications in various areas of biology. *Clin Immunol*. 2004, 110(3):252-266
  30. Telford WG, Hawley T, Subach F, Verkhusha V, Hawley RG. Flow cytometry of fluorescent proteins. *Methods*. 2012, 57:318-330
  31. Galanzha EI, Kokoska MS, Shashkov EV, Kim JW, Tuchin VV, Zharov VP. In vivo fiber-based multicolor photoacoustic detection and photothermal purging of metastasis in sentinel lymph nodes targeted by nanoparticles. *J Biophoton*. 2009, 2 (8-9):528-539
  32. Siegwart AJ, Srinivasan A, Bencherif SA, Karunanidhi A, Kwon Oh J, Vaidya S, Jin R, Hollinger JO, Matyjaszewski K. Cellular Uptake of Functional Nanogels Prepared by Inverse Miniemulsion ATRP with Encapsulated Proteins, Carbohydrates, and Gold Nanoparticles. *Biomacromolecules*. 2009, 10(8):2300-2309
  33. Brind'Amour J, Lansdorp PM. Analysis of repetitive DNA in chromosomes by flow cytometry. *Nat. Methods* 2011, 8: 484-486.
  34. Schmidt F, Efferth T. Tumor Heterogeneity, Single-Cell Sequencing, and Drug Resistance. *Pharmaceuticals (Basel)*. 2016, 9(2):pii: E33
  35. Ott G, Kalla J, Hanke A, Müller JG, Rosenwald A, Katzenberger T, Kretschmar R, Kreipe H, Müller-Hermelink HK. The cytomorphological spectrum of mantle cell lymphoma is reflected by distinct biological features. *Leuk. Lymphoma*. 1998, 32(1-2):55-63
  36. Rynningen A, Bruserud Ø. Epigenetic targeting in acute myeloid leukemia: use of flow cytometry in monitoring therapeutic effects. *Curr Pharm Biotechnol*. 2007, 8(6):401-411
  37. Lu Y, Chen JJ, Mu L, Xue Q, Wu Y, Wu PH, Li J, Vortmeyer AO, Miller-Jensen K, Wirtz D, Fan R. High-throughput secretomic analysis of single cells to assess functional cellular heterogeneity. *Anal Chem*. 2013, 85:2548-2556
  38. Passlick B, Flieger D, Ziegler-Heitbrock HW. Identification and characterization of a novel monocyte subpopulation in human peripheral blood. *Blood*. 1998, 74(7):2527-2534
  39. Zola H, Swart B, Nicholson I, Aasted B, Bensussan A, Boumsell L, Buckley B, Clark G, Drbal K, Engel P, Hart D, Horejs íV, Isacke C, Macardle P, Malavasi F, Mason D, Olive D, Saalmueller A, Schlossman SF, Schwartz-Albiez R, Simmons P, Tedder TF, Uguccioni M, Warren H. CD molecules 2005: human cell differentiation molecules. *Blood*. 2005, 106(9):3123-3126
  40. Chan JKC, Ng CS, Hui PK. A simple guide to the terminology and application of leucocyte monoclonal antibodies. *Histopathology*. 1998, 12(5):461-480
  41. Brackenbury R, Rutishauser U, Edelman GM. Distinct calcium-independent and calcium-dependent adhesion systems of chicken embryo cells. *Proc Natl Acad Sci USA*. 1981, 78(1):387-391
  42. Brown M, Wittwer C. Flow Cytometry: Principles and Clinical Applications in Hematology. *Clin Chem*. 2000, 46(8):1221-1229
  43. Kobayashi T, Yayoib E, Takatsukac Y, Maeurad Y, Furukawab J, Kitadae M, Okamoto S. Use of flow cytometry for evaluating breast cancer cell proliferation after chemotherapy. *Curr Therap Res*. 1995, 56(8):769-776

44. Joensuu H. DNA Flow Cytometry in the Prediction of Survival and Response to Radiotherapy in Head and Neck Cancer: A review. *Acta Oncol.* 1990, 29(4):513-516
45. Ishibashi K, Tsuji A. IL-2 or IL-4 mRNA as a Potential Flow Cytometric Marker Molecule for Selective Collection of Living T Helper 1 or T Helper 2 Lymphocytes. *Anal Chem.* 2003, 75:2715-2723
46. Hallam TJ, Wold E, Wahl A, Smider VV. Antibody Conjugates with Unnatural Amino Acids. *Mol Pharmaceutics.* 2015, 12:1848-1862
47. Patterson JO, Swaffer M, Filby A. An Imaging Flow Cytometry-based approach to analyse the fission yeast cell cycle in fixed cells. *Methods.* 2015, 82:74-84
48. Begg AC, Hofland I, Kummermehr J. Tumour cell repopulation during fractionated radiotherapy: correlation between flow cytometric and radiobiological data in three murine tumours. *Eur J Cancer.* 1991, 27(5):537-543
49. Jacobsen AB, Lunde S, Ous S, Melvik, Pettersen EO, Kaalhus O, Fosså SD. T2/T3 bladder carcinomas treated with definitive radiotherapy with emphasis on flow cytometric DNA ploidy values. *Int J Rad Oncol Biol Phys.* 1998, 17(5):923-929
50. Bendall SC, Nolan GP, Roederer M, Chattopadhyay PK. A deep profiler's guide to cytometry. *Trends Immunol.* 2012, 33(7):23-380
51. Wijkström H, Tribukait B. Deoxyribonucleic acid flow cytometry in predicting response to radical radiotherapy of bladder cancer. *J Urol.* 1990, 144(3):646-650
52. Krishan A, Ganapathi R. Laser flow cytometry and cancer chemotherapy: detection of intracellular anthracyclines by flow cytometry. *J Histochem Cytochem.* 1979, 27(12):1655-1656
53. DeSouza N, Zhou M, Shan Y. Cell Cycle Analysis of CML Stem Cells Using Hoechst 33342 and Propidium Iodide. *Methods Mol Biol.* 2016, 1465:47-57
54. Oli M, Aptamer conjugated gold nanorods for targeted nanothermal radiation of Glioblastoma cancer cells. A novel selective targeted approach to cancer treatment. *Young Sci J.* 2010, 3:18-25
55. Srinivas O, Larrieu SP, Duverger E, Boccaccio S, Bousser MT, Monsigny M, Fonteneau JF, Jotereau F, Roche AC, Synthesis of Glycocluster-Tumor Antigenic Peptide Conjugates for Dendritic Cell Targeting. *Bioconjugate Chem.* 2007, 18:1547-1554
56. Zhang P, Chiu YC, Tostanoski LH, Jewell CM. Polyelectrolyte Multilayers Assembled Entirely from Immune Signals on Gold Nanoparticle Templates Promote Antigen-Specific T Cell Response. *ACS Nano.* 2015, 9(6): 6465-6477
57. Baganz NL, Blakely RD. A Dialogue between the Immune System and Brain, Spoken in the Language of Serotonin. *ACS Chem Neurosci.* 2013, 4:48-63
58. Antognoni P, Terry NHA, Richetti A, Luraghi R, Tordiglione M, Danova M. The predictive role of flow cytometry-derived tumor potential doubling time (Tpot) in radiotherapy: open questions and future perspectives. *Int J Oncol.* 1998, 12(2):245-256
59. Chang Q, Hedley D. Emerging applications of flow cytometry in solid tumor biology. *Methods.* 2012, 57:359-36